

QUICK START GUIDE_S15AB

DURABOOK

THANK YOU FOR PURCHASING THE COMPUTER.

THIS GUIDE PROVIDES A QUICK SETUP OF YOUR COMPUTER.

Package Contents

Laptop PC



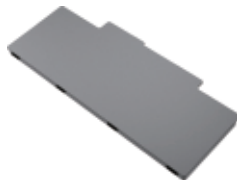
AC adapter



Power cord



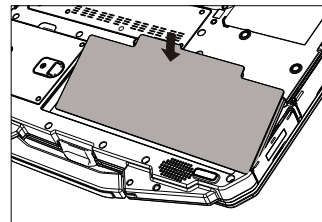
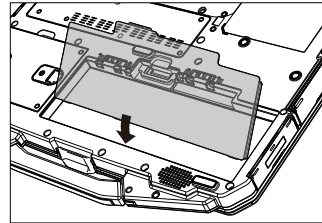
Li-ion Battery



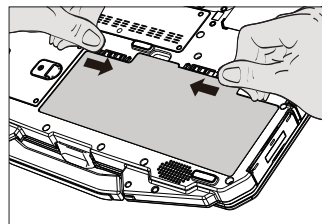
Standard configuration items.

1. Install The Battery

Align and insert the battery into the compartment.

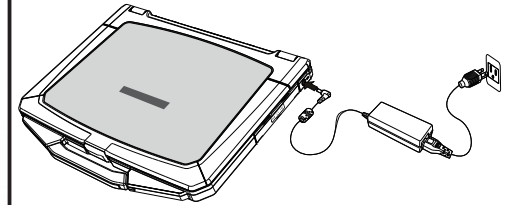


Make sure the latches are locked and secured.



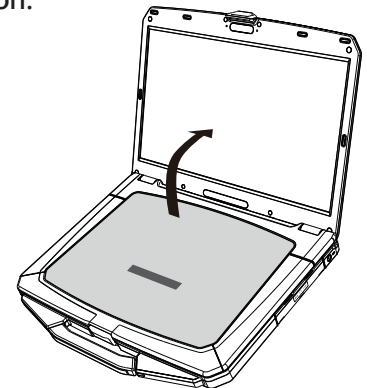
2. Connect The AC Adapter

The AC adapter powers up the device and charges the battery.



3. Power It On

Lift the display cover up to the upright position, then click the power button.



62+009691+00

QUICK START GUIDE_S15AB

DURABOOK

