

IS-DF305P Series

5 ports unmanaged Layer 2 Industrial PoE Switch



ISON IS-DF305P series are 10/100Mb unmanaged Ethernet Switches that providing 5 10/100Mb ports, w/ 4 PoE ports IEEE 802.3af/at PoE ports,. It' s fulfill easy touse, plug&play applications. With easy to use, cost effective unmanaged switch, user can easily use in factory production line or embedded into machine system. Also, IS-DF305P series unmanaged switches supports some useful function by default, such as QoS, storm protection. That can help for the network traffic optimization.



Key Features

- > 5 / 4 10/100Mb Copper ports with 0 / 1 100 SFP ports
- > Support up to 4 port IEEE 802.3af/at ports (15.4/30Watt)
- > IEEE 802.3x flow control & back-pressure
- > Layer 2 wire-speed switching engine
- > Support IEEE 802.1p TOS/Diffserv, QoS
- > Multicast / Broadcast / Flooding Storm Control
- > Fan-Less design with wide-temperature range (-40~75°C)
- > Redundant power input (46~57 VDC) & Reserve power protection
- > Support Din-Rail or wall mount installation
- > Support Relay Output Alarm
- > IP 30 Protection

Specifications

Ethernet

Operating Mode	Store and Forward, L2 wire-speed/non-blocking switching engine
MAC addresses	1K
Packet Buffer	1 Mbits

Copper RJ45 Ports

Speed	10/100 Mbps Support straight or cross wired cables
MDI/MDIX Auto-crossover	10/100 Mbps speed auto-negotiation; Full & Half Duplex

SFP (pluggable) Ports

Port Types supported	100 Base SFP Slot
Filter port connector	LC/RJ45 connector for fiber ports
Optimal fiber cable	Typical 50 or 62.5/125 μm for multimode (mm) Typical 8 or 9/125 μm for single mode (sm)

Features

QoS	IEEE 802.1p, TOS/Diffserv
Number of Queue	4
Storm Protection	Multicast/Broadcast/Flooding Storm Control
Traffic Shaper	Port-Based Port Sharping
PoE Function	IEEE 802.3af/at (15.4/30 Watt)

Power

Power Input	Redundant Power Input, Terminal Block
Input Voltage Range	46~57 VDC
Reserve power protection	YES
Power Consumption	IS-DF305P-4 3.6 Watt, IS-DF305P-F-4 4.3 Watt (Without PD load)

Indicators

Power status indication	Power Input status
Ethernet port indication	Line & speed

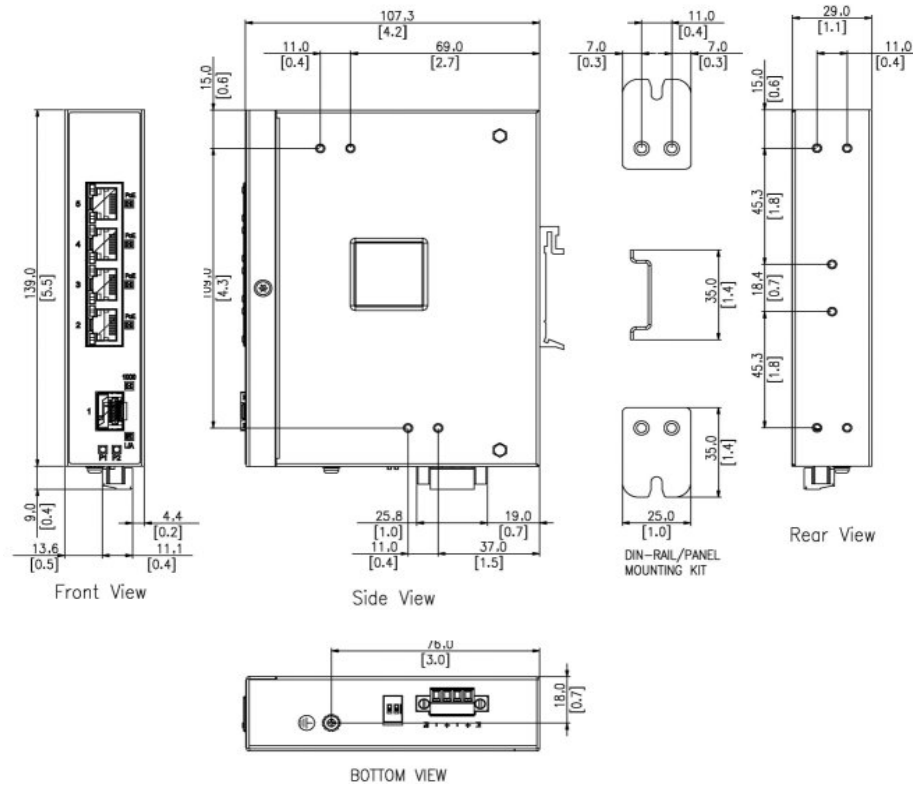
Environmental and Compliances

Operating Temperature	-40~75°C (Cold startup at -40°C)
Storage Temperature	-40~85°C
Humidity	5~95% (Non-Condensing)
Vibration, shock, free fall	IEC-60068-6, -27, -32
Certification Compliance	CE, FCC
Electrical safety	CE
EMC	FCC Part 15, CISPR 22 (EN55022) Class A IEC-61000-4-2, -3, -4, -5, -6 (Level 3)
RoHS & WEEE	RoHS (Pb free) and WEEE Compliant
MTBF	>25 years

Mechanical

Protection	IP30
Dimension	112.2mm (H) x 29.1mm (W) x 89.4mm (D) (without DIN rail clip)
Weight	295g
Installation	DIN-Rail mounting; Wall mounting
Relay Output Alarm	1A, 24VDC, Normal Open

Dimension Diagram



Ordering information

Available Models	Description	10/100Mb port	
		10/100Mb TX	100Mb FX
IS-DF305P-F-4	Industrial 5 port 10/100Mb Layer 2 unmanaged PoE Switch,	4	1
IS-DF305P-4	Industrial 5 port 10/100Mb Layer 2 unmanaged PoE Switch	5	

Accessories

- SFP Modules