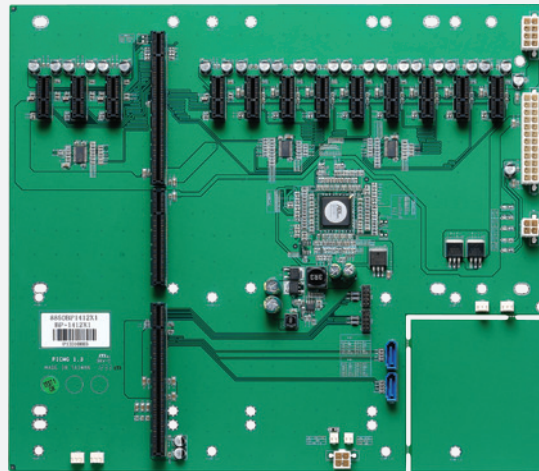


# NBP 1412X1

14-Slot Backplane for 4U Chassis with  
1 SHB Slot, 12 x PCIe1 Slots



## Main Features

- Greater Powers Delivery Capability, Supports High Performance
- System Host Board and Add-on Card
- Follows PICMG 1.3 Mount Holes and Compatible with GuangHsing's
- 4U Chassis
- Supports 12 x PCIe1
- Supports ATX/BTX Power Supply
- Compliance with PEAK 877VL2, PEAK 886VL2, PEAK 887VL2

## Product Overview

The NBP 1412X1 is a 14-slot backplane for 4U chassis with 1 SHB slot, 12 x PCIe1 slots. It follows PICMG 1.3 platform specifications and supports ATX power supply.

## Specifications

### System Architecture

- 14-slot backplane

### Dimension

- 317mm (L) x 273mm (W) (12.4" x 10.7")

### Slots

- 12 x PCIe1

### I/O Interface

- 4 x USB 2.0 with 2 x 9 pin-header
- 2 x SATA
- 6 x 3-pin FAN

### Power Input

- 1 x 24-pin power connector
- 1 x Terminal Block

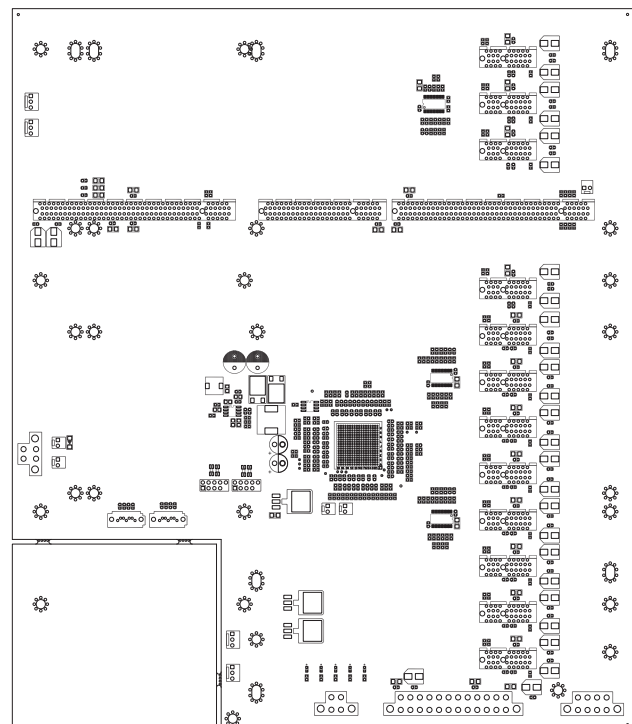
### Environment

- Operating temperature: 0°C to 60°C
- Storage temperature: -20°C to 80°C
- Relative humidity: 10% to 90% (Non-condensing)

### Certifications

- CE approval
- FCC Class A

## Dimension Drawing



## Ordering Information

- **NBP 1412X1 (P/N: 79N0141201X00)**  
PICMG 1.3 14-slot backplane for 4U chassis w/ 1 SHB slot, 12 PCIe1