

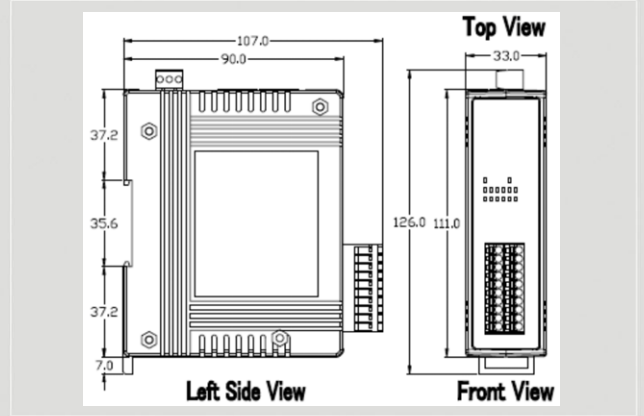


EtherNet/IP Series Products

Isolated 16-ch DO EtherNet/IP module



EIP-2042



Dimensions

The EIP-2042 is a remote digital output module with 16 outputs. It is designed as an EtherNet/IP adapter. Users can obtain the output status as well as the connection status of the EIP-2042 by the LEDs indication. In addition, ICPDAS provides software utility to easily configure and test the EIP-2000 modules via Ethernet.

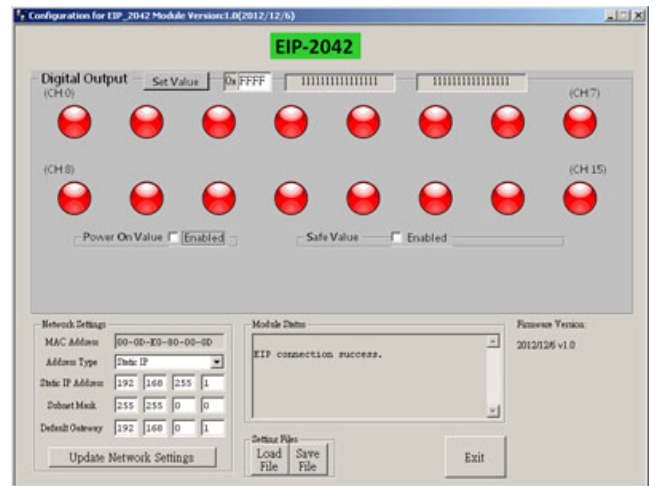
Features

- Transfer protocol: EtherNet/IP
- Powerful 32-bit MCU handles efficient network traffic
- 10/100 Base-TX Ethernet, RJ-45 x 2 (Auto-negotiating, auto MDI/MDIX, LED Indicators)
- Support ARP, TCP, UDP, ICMP, DHCP, BOOTP and TFTP protocols
- Easy firmware update via Ethernet
- Removable terminal block connector
- LED display to indicate the I/O status
- Built-In I/O
 - DO: 16 Channels
- Power-On-Value
- Safe-Value
- RoHS compliant

Utility Features

ICPDAS provides the EIP-2000 configuration utility for Windows 2K/XP/Vista and Win 7.

- Network parameters configuration
- Functions configuration such as Power-On-Value and Safe-Value.
- Easy test to transmit/receive the I/O status by EtherNet/IP
- Setting files management



Wire connection

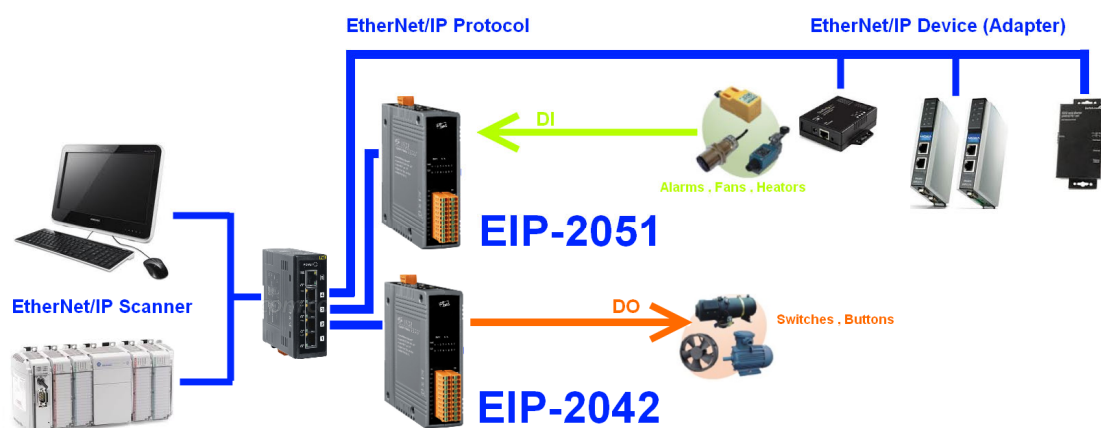
Output	ON	OFF
Drive Relay		
Resistance Load		



Hardware Specifications

Digital Output	
Channels	16
Isolation Voltage	3750 V _{DC}
Type	Open Collector
Sink/Source(NPN/PNP)	Sink
Load Voltage	+3.5 ~ +50 V
Max. Load Current	700mA per channel
Communication Interface	
Connector	10/100 Base-TX, 8-pin RJ-45 x 2 Support daisy chain connection.
Standard Supported	IEEE 802.3 Ethernet/IP
Power	
Input Voltage Range	10V ~ 30V
Power Consumption	1.6W
Mechanism	
Installation	DIN-Rail
Dimensions	110mm x 90mm x 33mm (H x W x D)
Environment	
Operating Temperature	-25°C ~ +75°C
Storage Temperature	-30°C ~ +80°C

Applications



Ordering Information

EIP-2042 CR

Isolated 16-ch DI EtherNet/IP Module (RoHS)