

# QUICK START GUIDE\_S14

**DURABOOK**

THANK YOU FOR PURCHASING THE COMPUTER.

THIS GUIDE PROVIDES A QUICK SETUP OF YOUR COMPUTER.

## Package Contents

Laptop PC



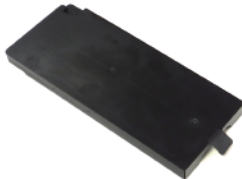
AC adapter



Power cord



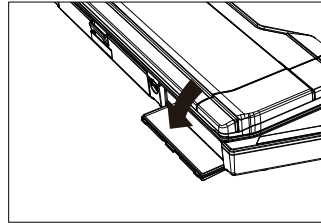
Li-ion Battery



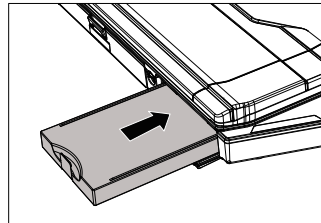
Standard configuration items.

## 1. Install The Battery

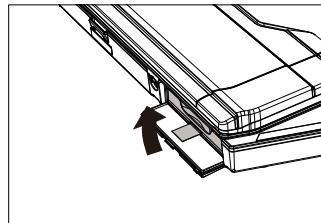
Open the battery compartment cover.



Insert the battery to the battery compartment. Push completely until the battery locks into place.

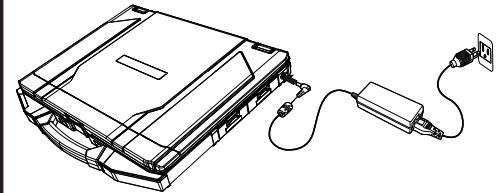


Close the battery compartment cover.



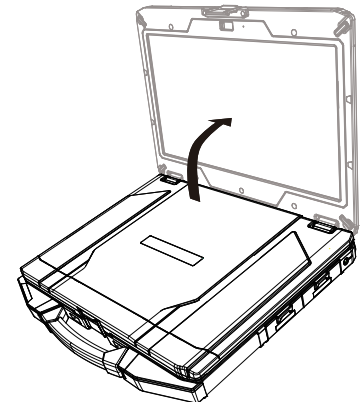
## 2. Connect The AC Adapter

The AC adapter powers up the device and charges the battery.



## 3. Power It On

Lift the display cover up to the upright position, then click the power button.



62+009703+00

# QUICK START GUIDE\_S14

# DURABOOK

