

Packing List

In addition to this guide, the package includes the following items:



I-9120



RS-232 Cable
(CA-0904)

Technical Support

service@icpdas.com

www.icpdas.com

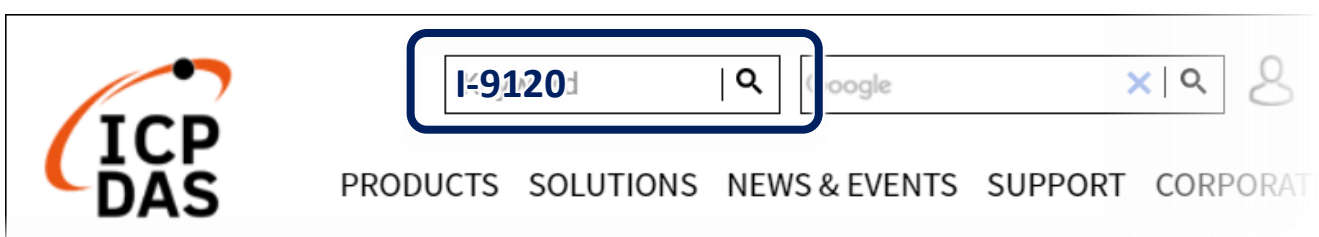
Resources

How to search for drivers, manuals and spec information on ICP DAS website.

- For Mobile Web



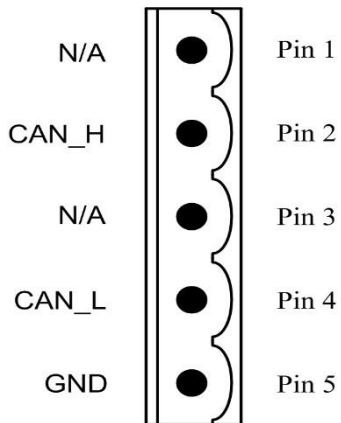
- For Desktop Web



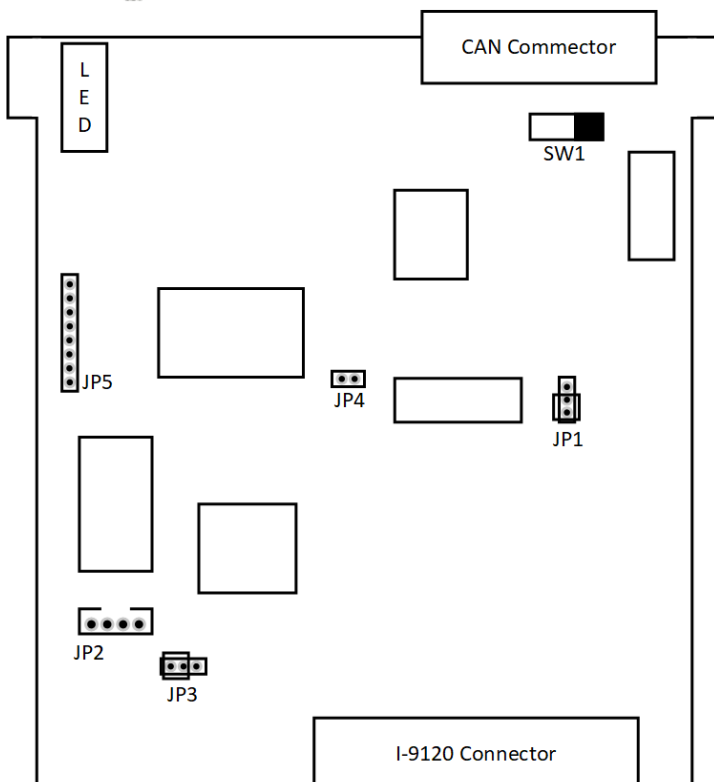
Hardware structure










Mode	LED	Description
Default Firmware	PWR	Turn ON when power on
	Tx/Rx	Flash once when getting/sending a CAN message
	Err	Turn ON for finding an error. Flash for transmitting fail.
User-defined Firmware	PWR	Turn ON when power on
	Tx/Rx	User-defined LED
	Err	
Download	PWR	Turn ON when power on
	Tx/Rx	Interlace flash once per second
	Err	



Pin No.	Signal	Description
1	N/A	Non-available
2	CAN_H	CAN_H bus line
3	N/A	Non-available
4	CAN_L	CAN_L bus line
5	GND	Ground

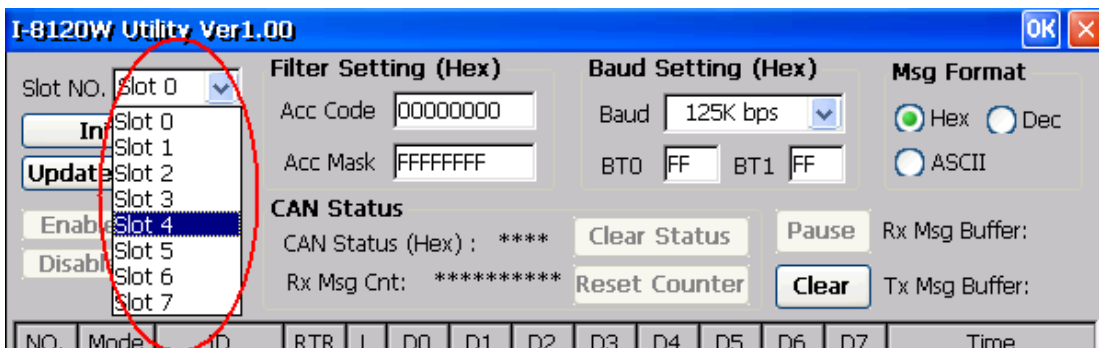


Jumper	Description	Status	
SW1	120Ω terminator resistance of CAN port.	<input checked="" type="checkbox"/> SW1 Enable	<input type="checkbox"/> SW1 Disable
JP1	Lock mode for resisting the noise or disturbances. In this case, updating firmware is not allowed. Unlock mode for updating the firmware of I-9120.	 JP1 Lock	 JP1 Unlock
JP2	Debug port for user-defined firmware. The I-9120 prints the debug messages or system information from this port. Connect this port to PC COM port. Use 7188xw.exe to show the messages. The baud rate is 115200 bps.		
JP3	This jumper is used to decide whether I-9120 automatically run the firmware. Or it will stay in OS mode.	 JP3 Run	 JP3 OS
JP4	Reset mode for forcing the I-9120 into download mode. Wiring this jumper until Tx/Rx LED and Err LED are always ON. Then, remove the wire.	 JP4 Reset	 JP4 Normal

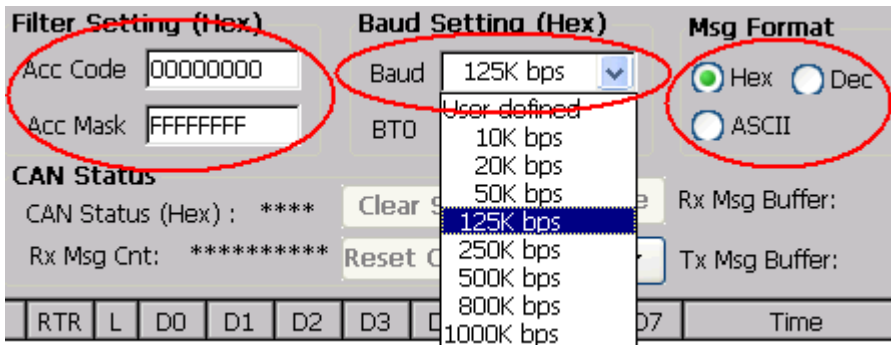
How to Start

For Default Firmware:

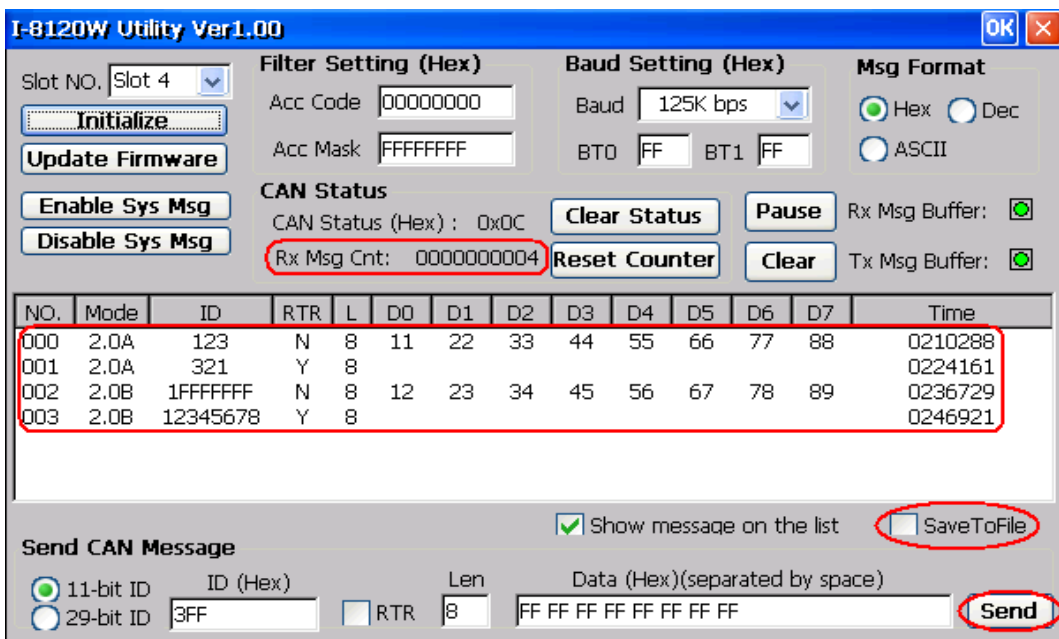
Step1: Run the I8120W_Utility.exe. Assume the I-9120 is plugged in slot 4 of the WinPAC, set the slot No. to slot 4.



Step2: Assume the baud of the CAN network is 125 kbps. Set the filter, baud, and message format as follows:

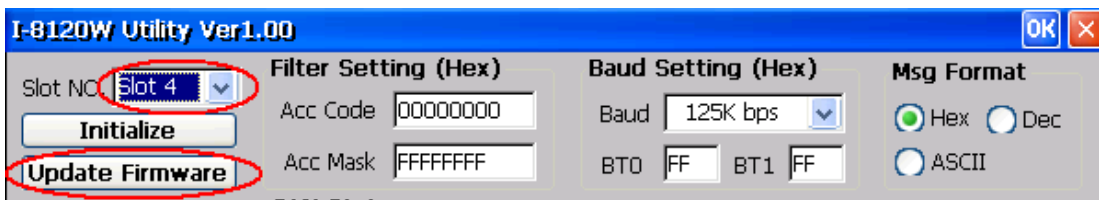


Step3: The receiving messages will be shown on the list, and users can use the button “Send” to send a CAN message. Use “SaveToFile” to save the receptions. In this case, uncheck the “Show message on the list” to improve the efficiency of the WinPAC.



For Updating Firmware:

Step7: Run the I8120W_Utility.exe. Assume the I-9120 is plugged in slot 4 of the WinPAC, set the slot No. to slot 4. Then, click the button “Update Firmware”.



Step8: Use ftp or USB disk to copy the newer firmware on to the WinPAC.

Step9: The pop-up dialog shows the information of current firmware. Click the button “Update”. Afterwards, select the newer file from the pop-up dialog.

