

Packing List

In addition to this guide, the package includes the following items:



WP-9x28-CE7



Screw Driver



Win-GRAF PAC & Software Utility CD



microSD card and SD/microSD adapter

WP-9228-CE7

WP-9428-CE7

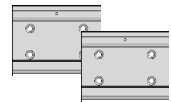
WP-9828-CE7



M3 x 6L Screw * 8



RJ-45 Waterproof Assembly

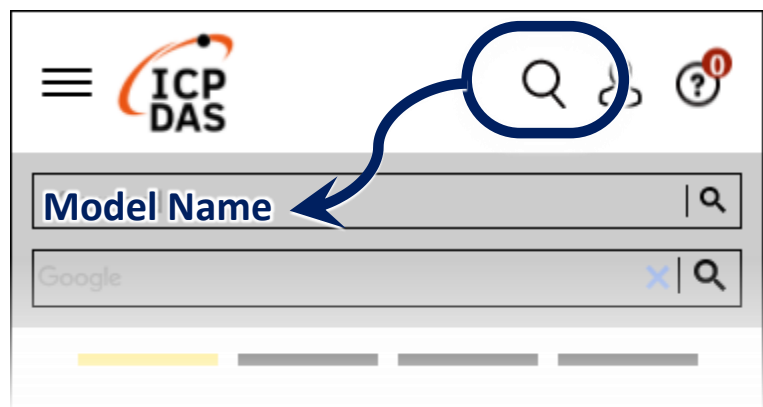


60mm DIN-Rail Clip * 2

Resources

How to search for drivers, manuals and spec information on ICPDAS website.

- For Mobile Web

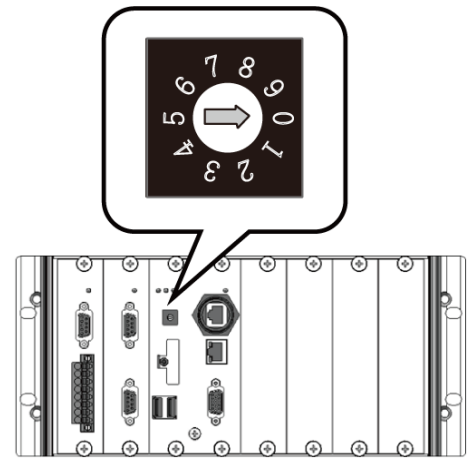


- For Desktop Web

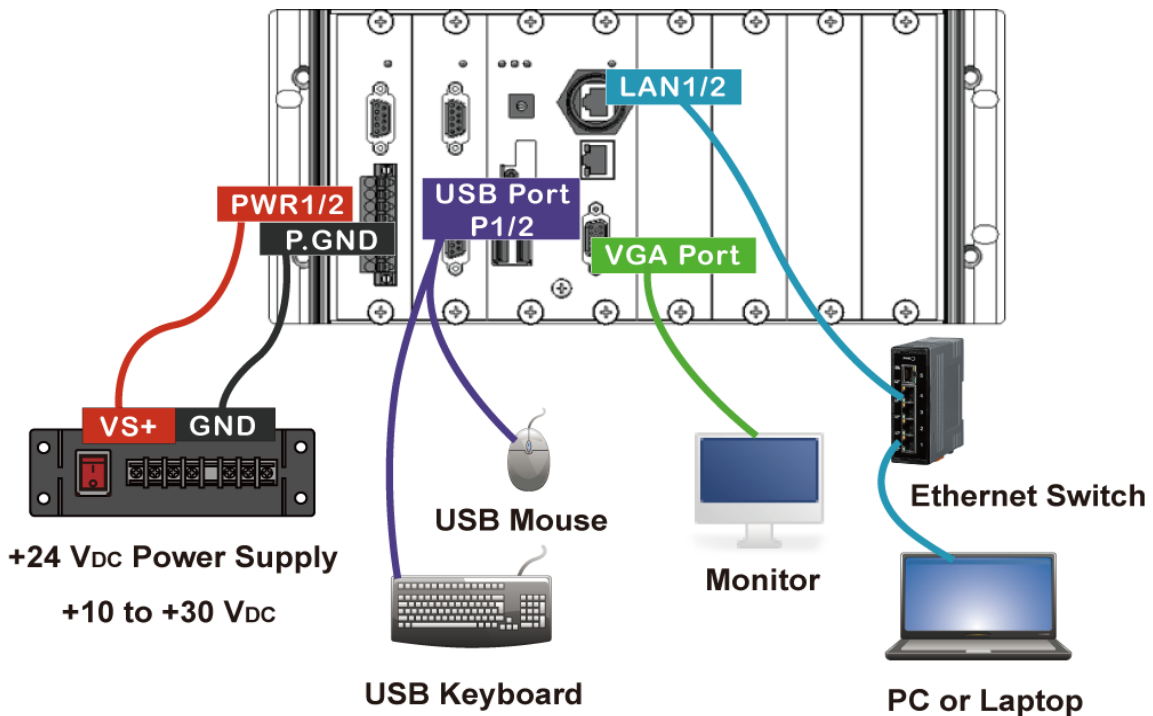


1 Configuring the Boot Mode

Before starting any installation, be sure that the switch is placed in the '0' position.

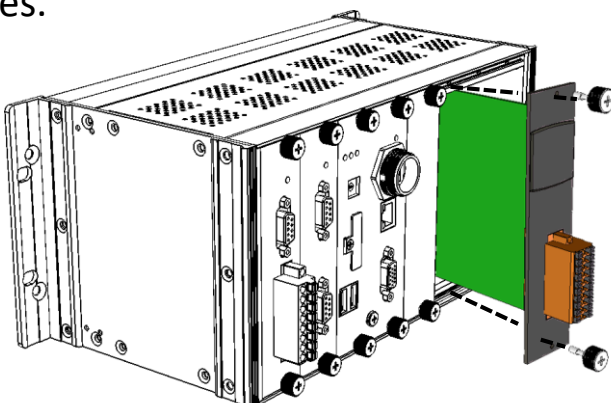


2 Connecting to PC, Monitor and Power Supply



3 Inserting the I/O Module and Wiring Connection

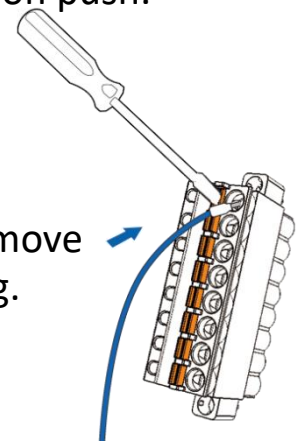
WP-9x28-CE7 has 2/4/8 I/O expansion slots and only supports I-9K and I-97K series I/O modules.



Connect/Remove the wiring

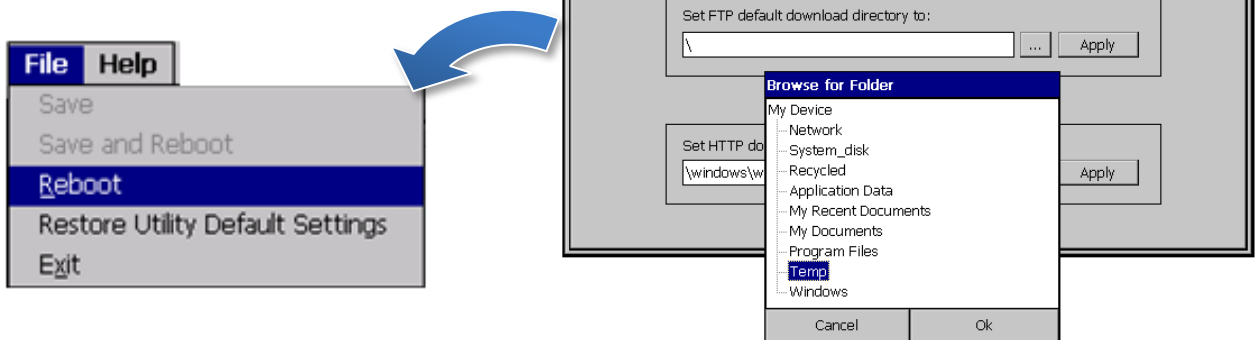
1. Push the orange clip in, and keep on push.

2. Insert/remove the wiring.




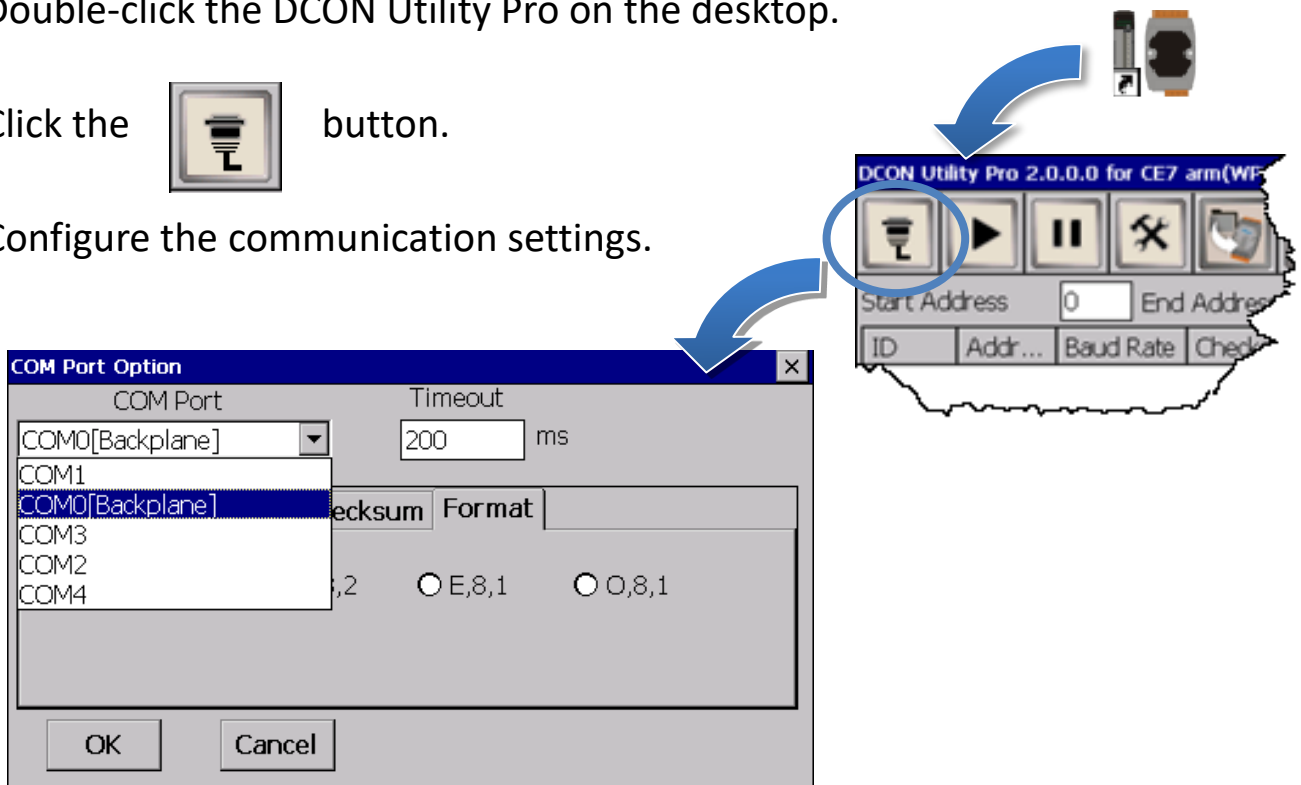
4 Using PAC Utility to Manage the WP-9x28-CE7

- 1) Double-click the PAC Utility on the desktop.
- 2) Configure IP address (DHCP), FTP Server, Auto Execution files..., etc.
- 3) Reboot the WP-9x28-CE7 for changes to take effect.



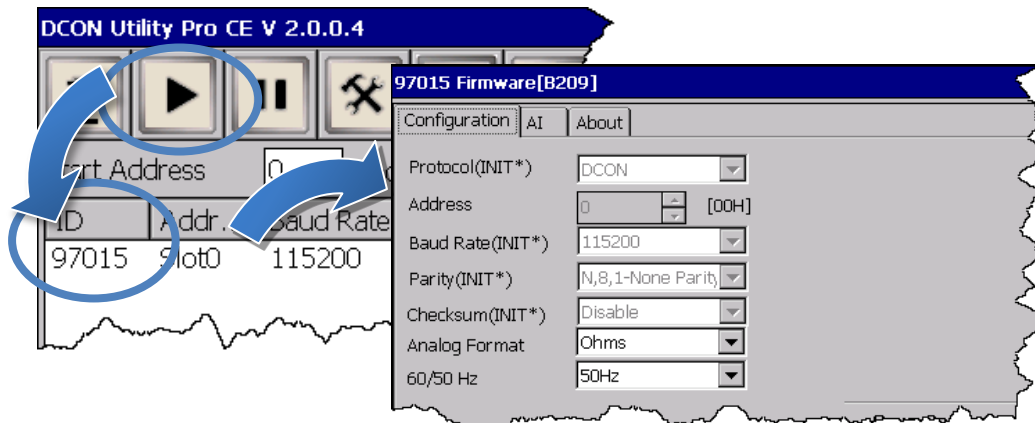
5 Using DCON Utility Pro to Configure I/O Modules

- 1) Double-click the DCON Utility Pro on the desktop.
- 2) Click the  button.
- 3) Configure the communication settings.



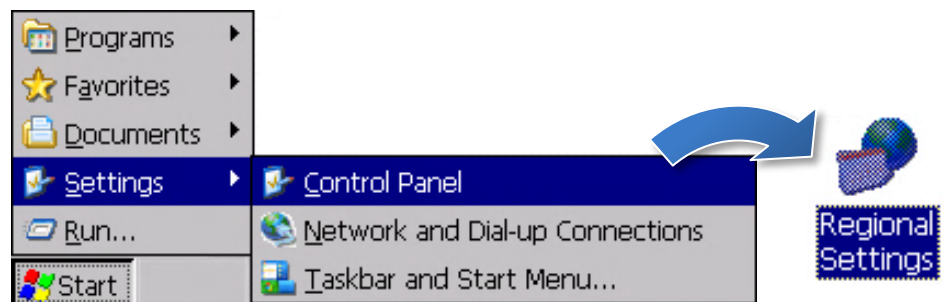
4) Click the  button.

5) Click the module name to configure the I/O module.

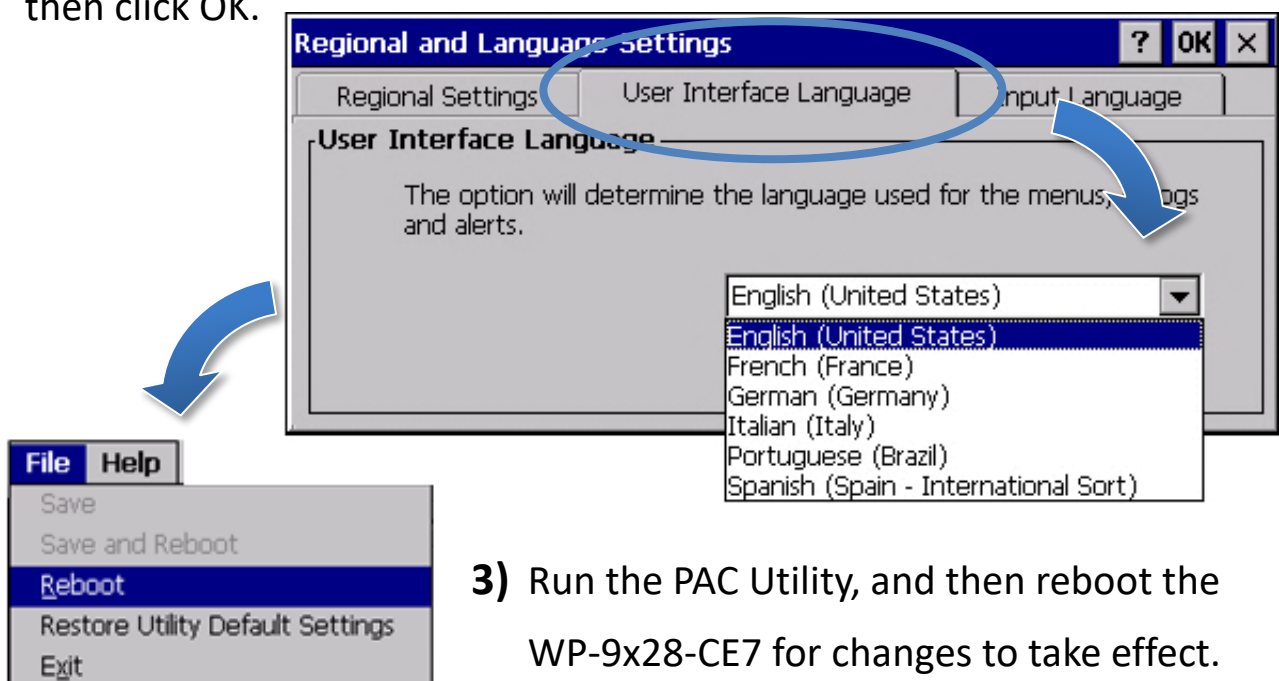


6 Changing the User Interface Language

1) Click Start menu, point to Settings, click Control Panel, and then click Regional Settings.



2) Click User Interface Language tab, choose to your local language, and then click OK.



3) Run the PAC Utility, and then reboot the WP-9x28-CE7 for changes to take effect.