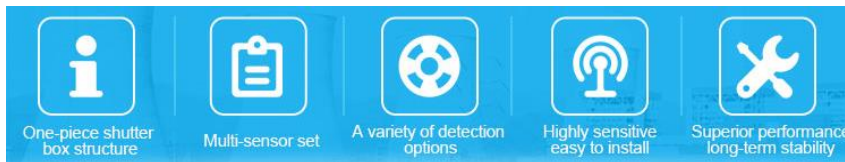


# Outdoor CO<sub>2</sub>/PM2.5, Illumination, Temperature/Humidity, Noise, Atmospheric Pressure Sensor for Small Weather Station, Agriculture Applications

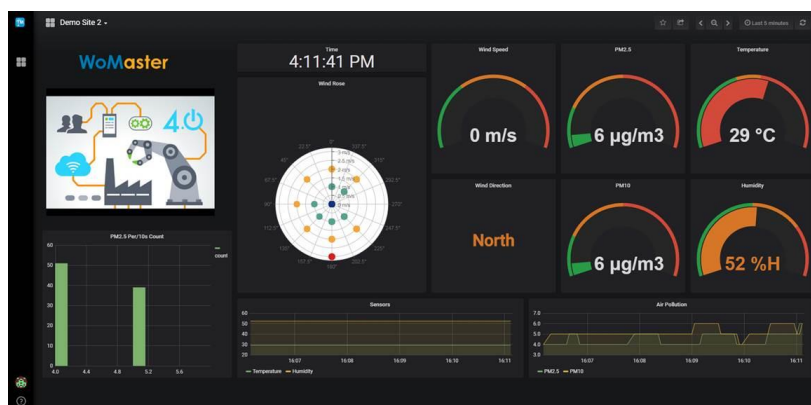
## ES105-5

ES105-5 is an intergraded sensor box for all types of environmental monitoring including illumination, temperature, humidity, CO<sub>2</sub>/PM2.5 and Atmospheric Pressure for agriculture environments. Each parameter is independent and high sensitivity, users can freely integrate monitoring parameters. ES105-5 has the characteristics of high precision and good stability, which is suitable for various environmental monitoring.



### Features & Benefits

- **Intergraded Device**
  - Intergraded multiple sensors
  - Central management by sharing a signal output
  - Support Industrial Modbus RTU protocol, RS485
- **Outdoor Protective Enclosure**
  - Prevent direct ultraviolet radiation to the sensors
  - Avoid rapid aging of sensors under harsh environmental conditions such as strong winds, rain, and snow
  - The sensor parts are ventilated for truly sensing the changes in external detection parameters
- **Flexible Design**
  - Customized Shutter Height
    - Single or multiple parameters both can use small shutter, small size, light weight and easy to install
  - Customized Monitoring parameters
    - Each parameter is independent and high sensitivity, users can freely integrate monitoring parameters
- **Work with IoT Cloud Platform - ThingsMaster**
  - Real-time online monitoring, analysis, reporting
  - Remote cloud security and visual management



Temperature & humidity	
<b>Measuring Range</b>	Temperature -40-80°C Humidity 0%RH-100%RH
<b>Output Signal</b>	RS485 / (Modbus protocol)
<b>Power Supply</b>	10-30VDC
<b>Accuracy</b>	Temperature±0.5°C(25°C) Humidity:±3%RH(5%RH-95RH, 25°C)
<b>Long term stability</b>	Temperature ≤0.1°C/year Humidity ≤1%RH/year
<b>Response time</b>	Temperature <15/S(1m/s wind speed)
Illumination	
<b>Measuring Range</b>	0-200000 Lux
<b>Output Signal</b>	RS485 / (Modbus protocol)
<b>Power Supply</b>	10-30VDC
<b>Accuracy</b>	±7%(25°C)
<b>Long term stability</b>	≤0.5°C/year
<b>Response time</b>	0.1 second
CO2 (Either CO2 or PM2.5/PM10)	
<b>Measuring Range</b>	0-5000ppm
<b>Output Signal</b>	RS485 / (Modbus protocol)
<b>Power Supply</b>	10-30VDC
<b>Accuracy</b>	±40ppm +3%FS(25°C)
<b>Long term stability</b>	≤30ppm/year
<b>Response time</b>	<10/S (1m/s wind speed)
PM2.5/PM10 (Either CO2 or PM2.5/PM10)	
<b>Measuring Range</b>	0~1000ug/m3
<b>Resolution</b>	1ug/m3
<b>Output Signal</b>	RS485 / (Modbus protocol)
<b>Power Supply</b>	10-30VDC
<b>Accuracy</b>	±10%
<b>Response time</b>	<90 seconds
<b>Operation Temperature</b>	Temperature -20-60°C Humidity:0%RH-80%RH
Atmospheric pressure	
<b>Measuring Range</b>	0-120Kpa
<b>Output Signal</b>	RS485 / (Modbus protocol)
<b>Power Supply</b>	10-30VDC
<b>Accuracy</b>	±1.5Kpa(25°C)
<b>Long term stability</b>	0.1Kpa/year
<b>Response time</b>	≤1 second
<b>Operation Temperature</b>	Temperature -20-60°C Humidity:0%RH-80%RH
Noise	
<b>Measuring Range</b>	30dB~120dB
<b>Frequency Range</b>	20Hz~12.5Hz
<b>Output Signal</b>	RS485 / (Modbus protocol)
<b>Power Supply</b>	10-30VDC
<b>Accuracy</b>	±0.5dB
<b>Long term stability</b>	<2%
<b>Response time</b>	≤3 seconds
<b>Operation Temperature</b>	Temperature -20-60°C Humidity:0%RH-80%RH



## Ordering Information

Model	Description
<b>ES105-5-</b>	Outdoor Environment Basic Unit, IP. Output: RS485
<b>-T/H</b>	Temperature and Humidity sensor. Output: RS485
<b>-CO2</b>	CO2 sensor. Output: RS485
<b>-PM</b>	PM2.5 / PM10 sensor. Output: RS485
<b>-N</b>	Noise Sensor. Output: RS485
<b>-P</b>	Atmospheric Pressure Sensor. Output: RS485
<b>-L</b>	Illumination Sensor. Output: RS485
	<b>Package List</b>
	1 x Shutter
	1 x QIG